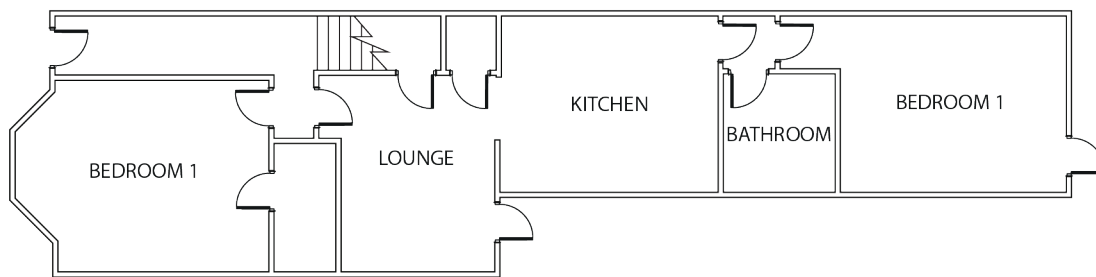


6 Steps for a compliant HMO Zone Plan

1. Detailed layout of the property

A 'birds-eye-view / top down' floor plan layout showing all bedrooms, hallways, and shared spaces (kitchen, living room etc).



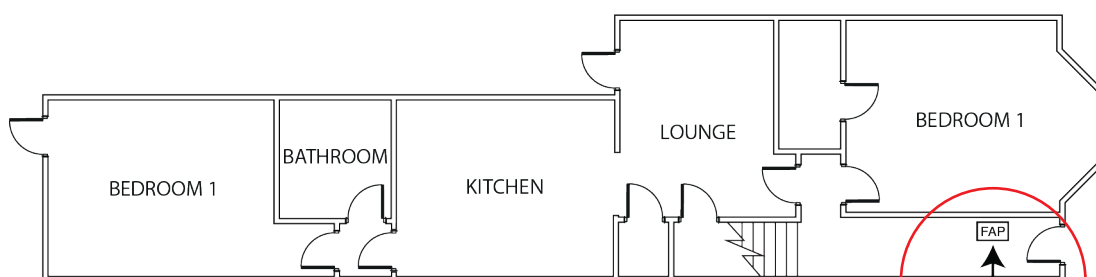
GROUND FLOOR

2. Fire Alarm Panel and 'YOU ARE HERE' indicator

The precise location of the Fire Alarm Panel is required to help occupants understand their location within the building. This must be the exact wall on which the fire alarm panel is mounted along with an arrow that shows the direction when facing it. The arrow must always point straight up.

! Accurate Orientation !

The plan should accurately reflect the building's physical layout as if you are looking at the fire alarm panel (see above) to prevent confusion when beginning to navigate the building. DO THIS BIT FIRST.



GROUND FLOOR

**YOU
ARE
HERE**

! NOTE ! This is the #1 error people make when creating zone plans and is a non-compliance issue. The image above shows the plan rotated 180 so that it is correctly oriented in relation to the fire alarm panel.

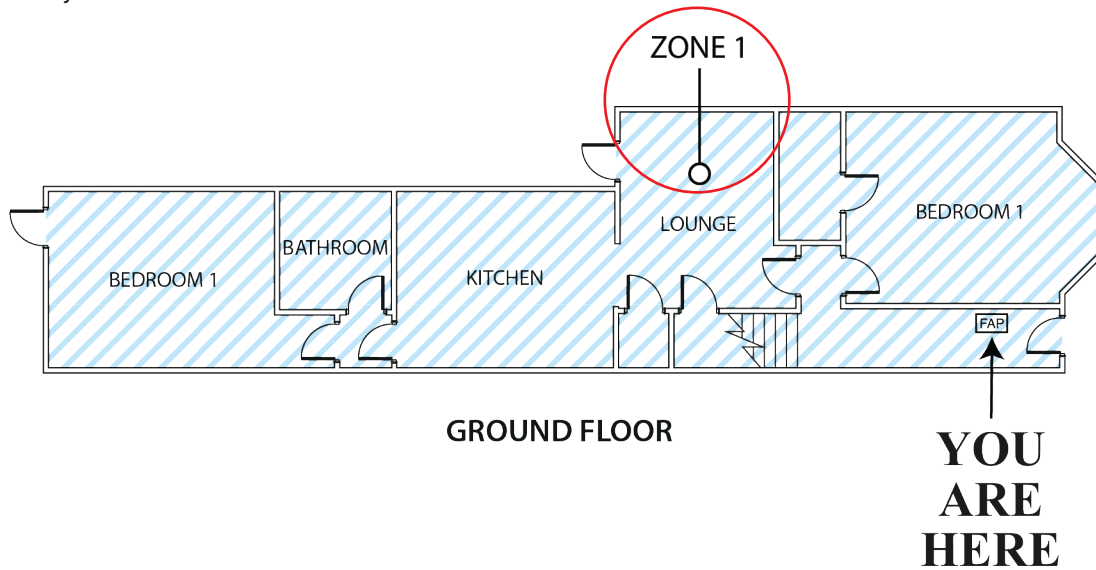
Because your premises are not 100% compliant without a zone plan.

We're more than happy to help - Call on 020 3488 7987 or email info@zoneplans.uk

www.zoneplans.uk/hmo

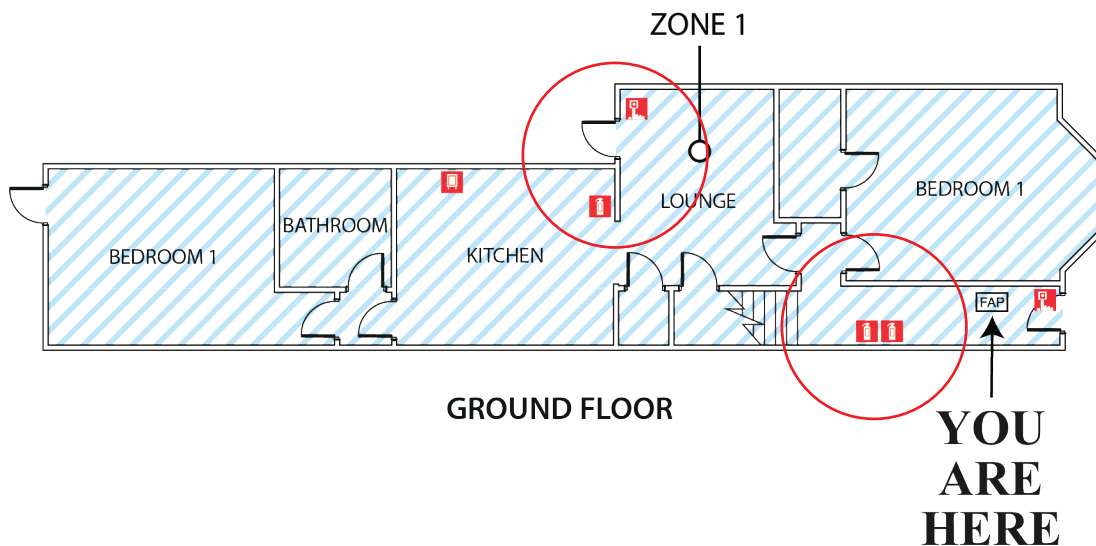
3. Clearly Marked Zones

Each fire alarm zone must be clearly labelled and coloured for easy identification.



4. Fire Safety Equipment

The precise locations of fire extinguishers, fire blankets and manual call points (all fire safety equipment that can be operated by a person) are required to be shown on the zone plan.



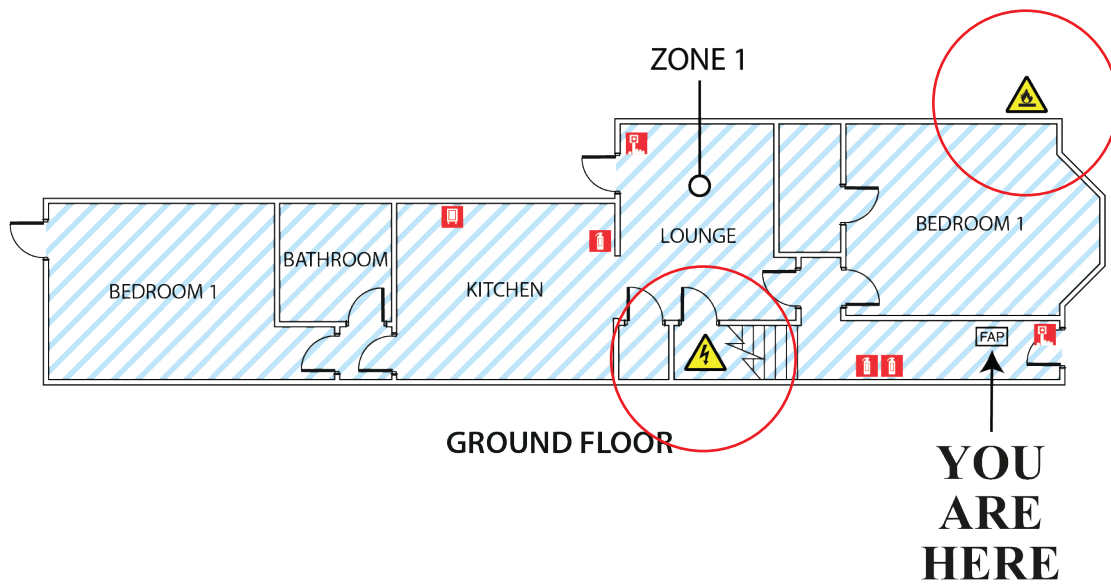
Because your premises are not 100% compliant without a zone plan.

We're more than happy to help - Call on 020 3488 7987 or email info@zoneplans.uk

www.zoneplans.uk/hmo

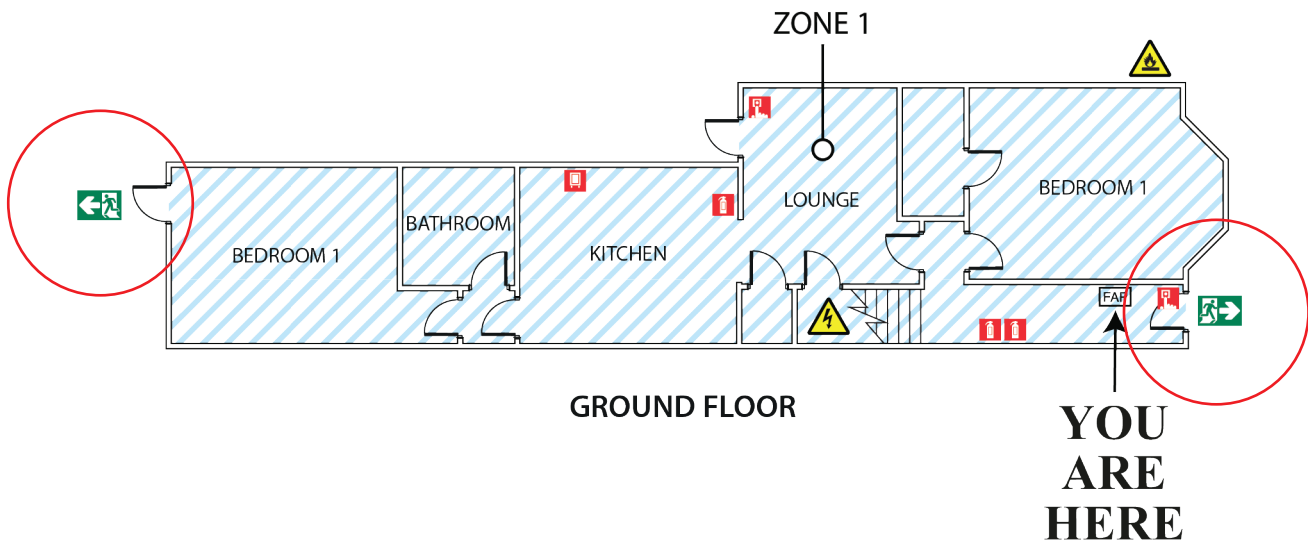
5. Fuse Board and Gas Shut Off

The precise locations of the fuse board and gas shut off are required to be shown on the zone plan.



6. Fire Exits

All fire escapes that lead outside to safety should be marked.



Because your premises are not 100% compliant without a zone plan.

We're more than happy to help - Call on 020 3488 7987 or email info@zoneplans.uk

www.zoneplans.uk/hmo